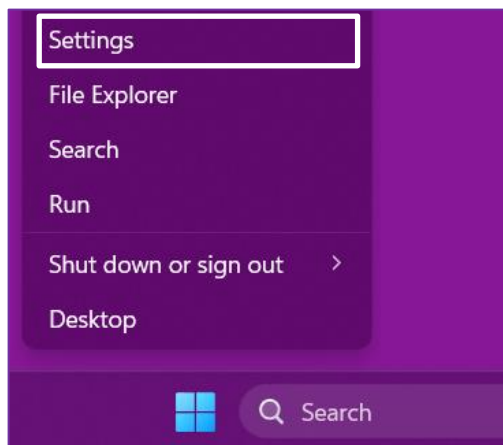




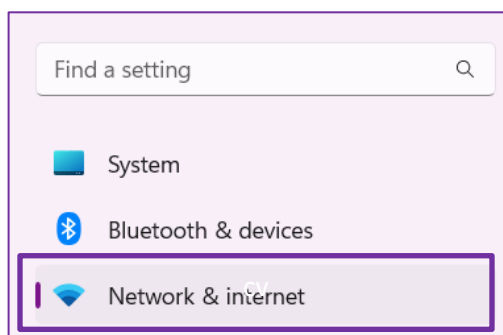
# Windows 11 Networking

## Step 1: Set Static IP Address on Computers

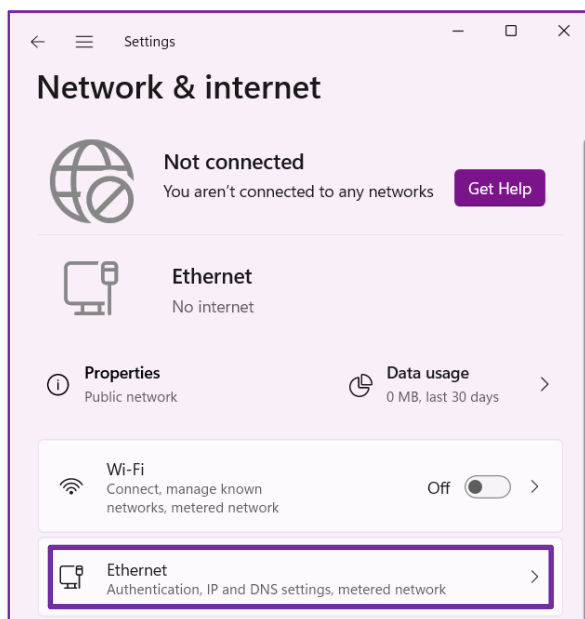
1. Right-click on the **Windows Start button** and select **Settings**.



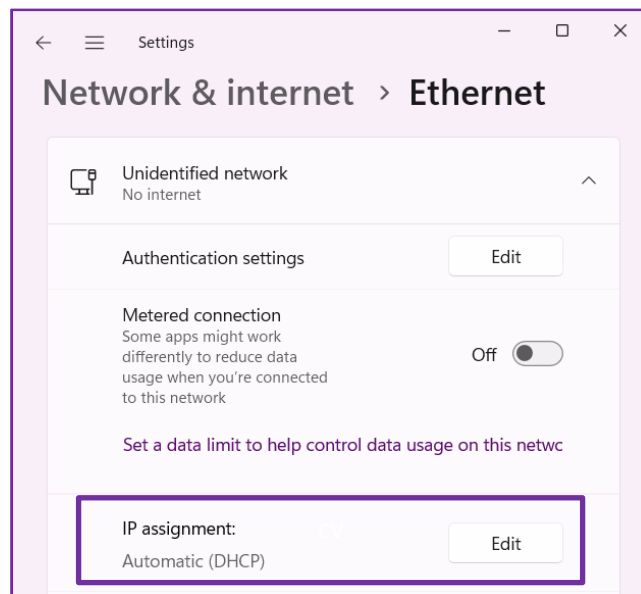
2. Choose **Network and Internet**.



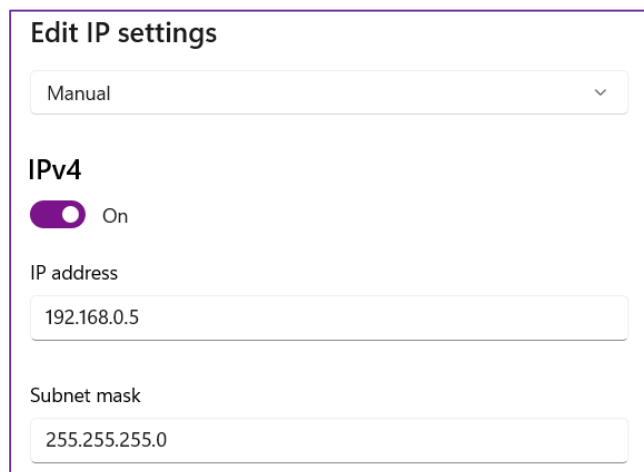
3. Click **Ethernet**.



4. Click **Edit** next to **IP Assignment**.



5. Select the following:
  - a. **Manual**
  - b. **IPv4 = On**
  - c. **IP Address**
    - i. FinishLynx PC = 192.168.0.5
    - ii. Meet Mgr PC = 192.168.0.90
  - d. **Subnet Mask = 255.255.255.0**
  - e. Click **Save**.

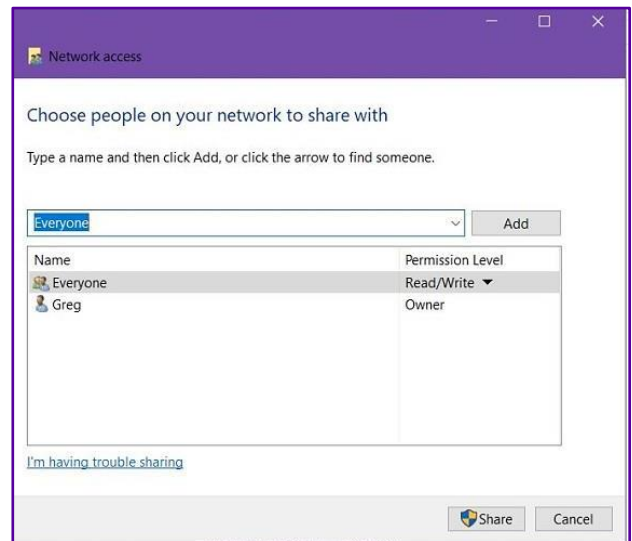
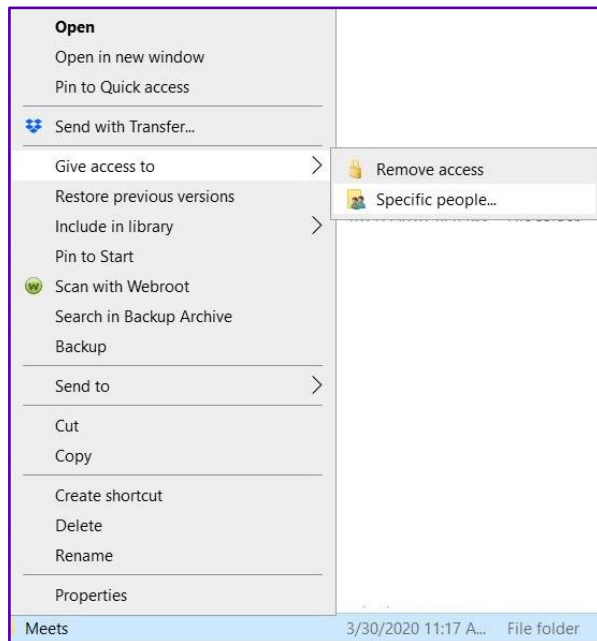


## Step 2: Set Network Settings

1. Navigate to:  
**Start | Settings | Network and Internet | Advanced network settings | Advanced sharing settings.**
2. Change your settings to match the following:
  - a. **Public networks:** Turn **ON** Network Discovery and turn **ON** File and Printer Sharing
  - b. **All Networks:** Turn **ON** Public Folder Sharing, use **128-bit encryption**.
3. These settings are recommended for BOTH the FinishLynx computer and the meet manager computer.

## Step 3: Create a Meet Directory Folder and Make it a Mapped Drive

1. Create a folder on your FinishLynx computer.  
 Right-click on the folder and click **Show More Options...**
2. Navigate to **Give access to | Specific People...**



3. From the drop-down list, choose **Everyone** and click **Add**.
  - a. Once **Everyone** is added to the list below, change their Permission Level to **Read and Write**. Then click **Share**.
  - b. The folder should now be visible to your meet manager computer.
4. On the meet manager computer, open **File Explorer** and from the list on the left choose **This PC**.
  - a. At the top click **Map Network Drive**.
  - b. Click **browse** and then browse through the network to the FinishLynx computer.

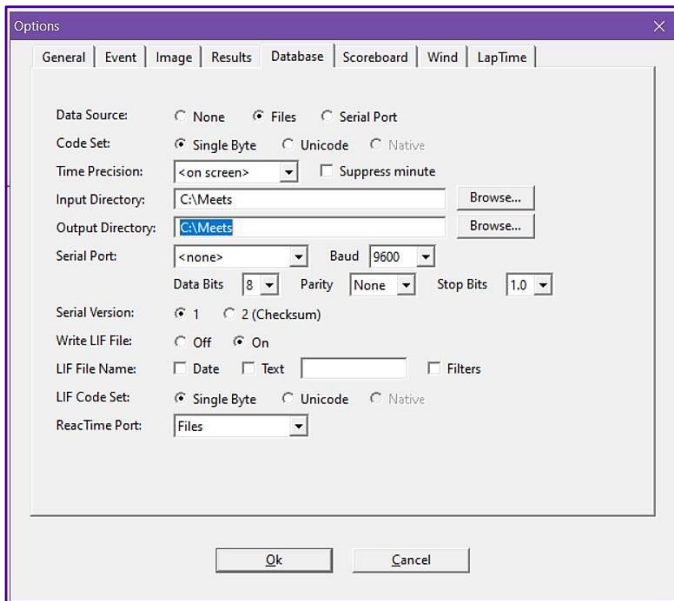
- c. Double-click on the FinishLynx computer's name and navigate to the database folder you just created and shared on the FinishLynx computer.

**a. If you do not see the FinishLynx PC listed or get a Windows network error "Windows cannot access \\FL-PC-NAME" see the troubleshooting steps at the end of this document.**

- b. Double-click on that folder and click **OK**, check **reconnect at sign-in** and click **Finish**.
- c. The database folder you just created and shared on the FinishLynx computer is now a mapped drive on the meet manager computer.
- d. In your meet manager software, when you go to update your start-list, you can simply choose this new drive instead of navigating through the network.

## Step 4: Configure FinishLynx to load the schedule and start lists and save results files

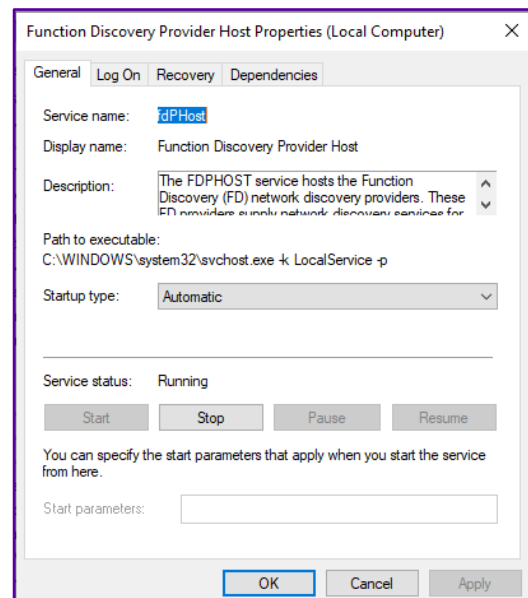
1. In FinishLynx, navigate to **File | Options | Database tab**.
  - a. Next to *Input Directory* click **Browse**; navigate to and double-click on the database folder you created earlier. Click **OK**
  - b. Repeat this step for the *Output Directory* or simply copy the file path from the input directory box and paste it into the output directory box. Click **OK**.
2. Once you generate a start list from the meet manager software into the database folder, FinishLynx is ready to load an event from the schedule.
  - a. To do this, Navigate to **File | Goto event....**
  - b. Click **Load schedule** and then expand the drop-down list; you will see your list of events generated by the meet manager.
  - c. Select your first event and click **OK**. It is now armed and ready!



## Troubleshooting potential networking issues

If you are having trouble seeing the other computer in File Explorer | Network, follow these steps on both computers:

1. Next to the Windows Start Button in the *Search* bar, type **Services** and select it once it appears.
2. Scroll down to the two services named *Function Discovery Provider Host* and *Function Discovery Resource Publication*.
3. For each one, right-click on it and choose **Properties**.
  - a. Change the *startup type* to **Automatic**.
  - b. If *service status* is *Stopped*, click **Start**.
  - c. Click **Apply** and **OK**.
  - d. Repeat for the other service. Both services' statuses should now be *Running*.
4. Each computer should now be visible to the other in File Explorer.





**If you are having trouble selecting the other computer when trying to map the drive and get the error message “Windows cannot access \\[PC-NAME],” follow these steps on both computers:**

---

After a recent Windows 11 update to version 24H2, Windows may not allow you to access shared folders and files on another networked PC. A symptom of this issue is if you go to File Explorer | Network on the meet manager PC and double-click on the FinishLynx PC listed; you will get a Network Error pop-up that looks like the one shown here. If you see this issue, follow the steps in the linked article below.

Article: [FIX: Windows 11 24H2 Cannot Access Network Shares \(0x80070035\)](#)

